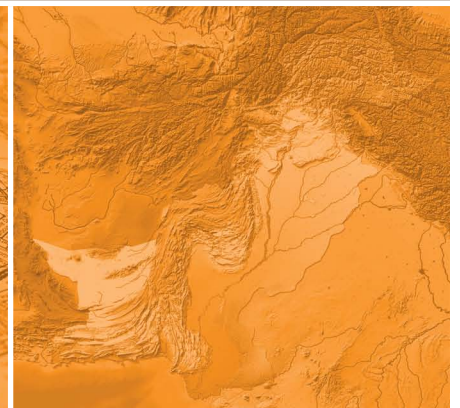
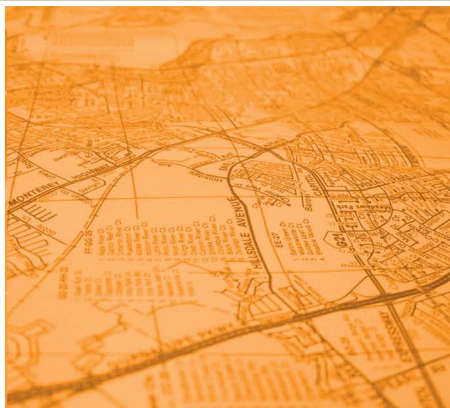




# Connect. Transform. Automate.

Create harmony between data and applications.



# FME Platform

## Key Capabilities

### Conversion

Move data between hundreds of applications and formats across GIS, CAD, database, 3D, raster and more. Solve the problem of incompatible formats and use data within your preferred application.

### Transformation

Ensure that information is never "lost in translation". The library of transformers in FME® let you manipulate data content and structure to meet the requirements of the destination system.

### Integration

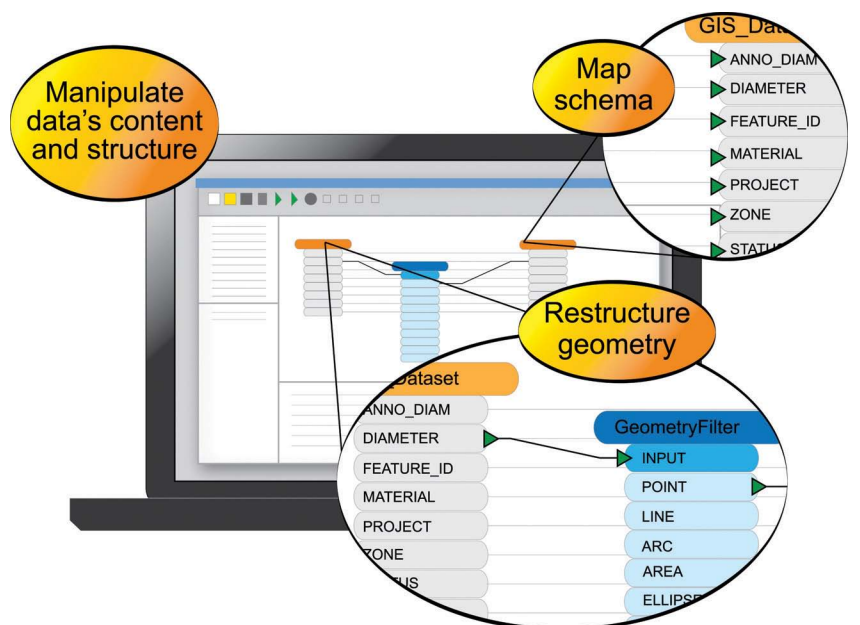
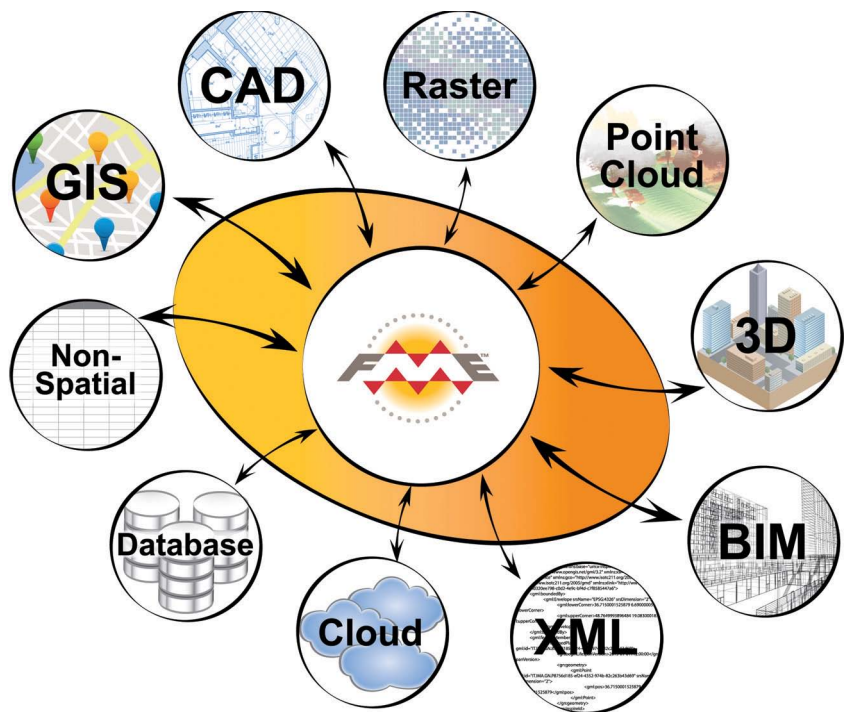
Combine data from different sources into a unified format and structure. A single FME workspace can help you eliminate data silos and realize the benefits of an integrated dataset.

### Sharing

Ensure colleagues have access to the data needed to make informed decisions. FME helps you improve interoperability and share data when, where, and how it's needed.

### Validation

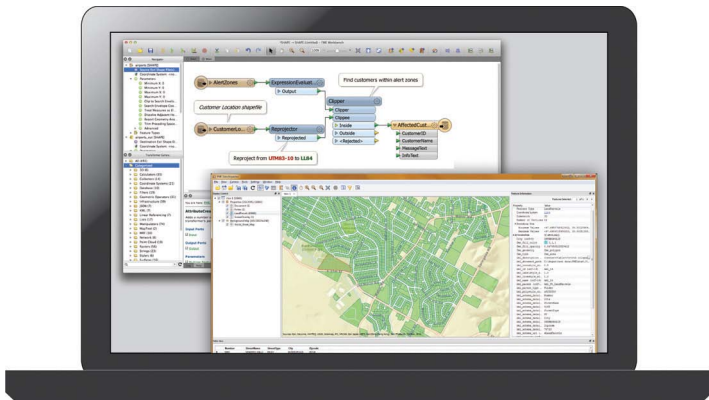
Run validation tests to identify if and where problems may exist. Review the results, take action as needed, and feel confident that your analysis is based on sound data.



# Products

## One Powerful Transformation Engine – Three Ways to Deploy

### FME Desktop



### Key Components:

#### FME Workbench

Everything FME begins here. Use FME's graphical authoring environment to transform data in unlimited ways. Drag and drop hundreds of powerful data readers, writers and transformers and efficiently configure workflows - no coding required.

#### FME Data Inspector

Understand data's structure before, after and even during translation by inspecting its attributes and geometry in this visual and interactive environment.

**Free FME Desktop Trial.** Get started today at [www.safe.com/trial](http://www.safe.com/trial)

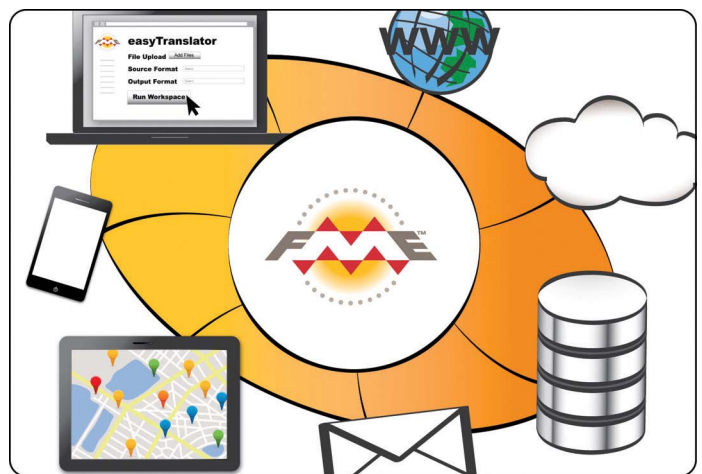
### FME Server

Take the power of FME to the enterprise with automation capabilities. Use FME Server to provide self-serve access to FME workflows, execute tasks according to schedule or in response to real-time events, and automatically move data from anywhere to anywhere with support for web, email and mobile protocols.

**Free FME Server Trial.** Get started today at [www.safe.com/servertrial](http://www.safe.com/servertrial)

### FME Cloud

This hosted version of FME Server is the world's first location-aware iPaaS (integration Platform as a Service). Connect cloud, on-premise and mobile applications with infrastructure that automatically scales to suit capacity requirements. Get started in minutes, and pay only for what you use.



**Free \$250 Voucher for FME Cloud.** Claim your voucher at [www.fmecloud.com](http://www.fmecloud.com)



## About Safe Software

The people at Safe Software believe that data is power and being able to unleash that power is the key to successful planning and decision making.

Since 1993, Safe has been committed to helping others achieve this goal through its data transformation technology - FME. FME is used by thousands around the world and across many industries, and is also integrated in other leading software solutions.

Safe takes pride in helping customers gain control of their data so they can use it when, where, and how they need it.

**[www.safe.com](http://www.safe.com)**

